

**UNIVERSIDADE DOS AÇORES**  
**Departamento de Ciências da Educação**  
**Licenciatura em Educação Básica**

Ano Lectivo: 2010/2011

3º Ano/5º Semestre

Aplicações da Matemática



**Docente:** Dr. Ricardo Teixeira

**Discentes:**

Carolina Raposo

Cátia Rodrigues

Tânia Melo

14 de Dezembro de 2010

## O Nosso Catálogo de Exemplos

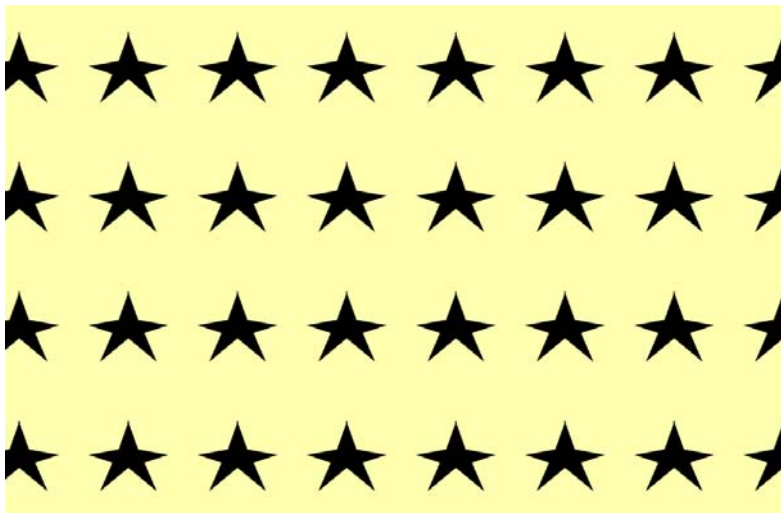
$W_1^1$

### Marrocos



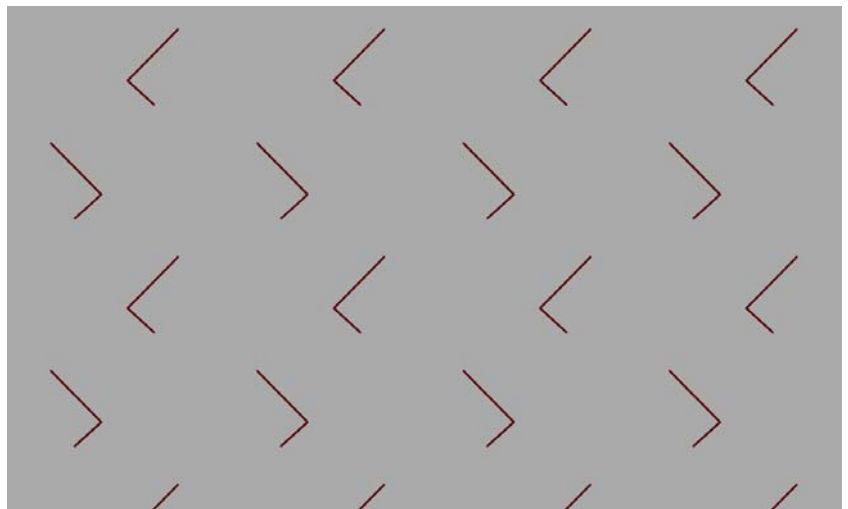
$$W_1^2$$

**Calçada em frente à Igreja da Matriz**



$W_1^3$

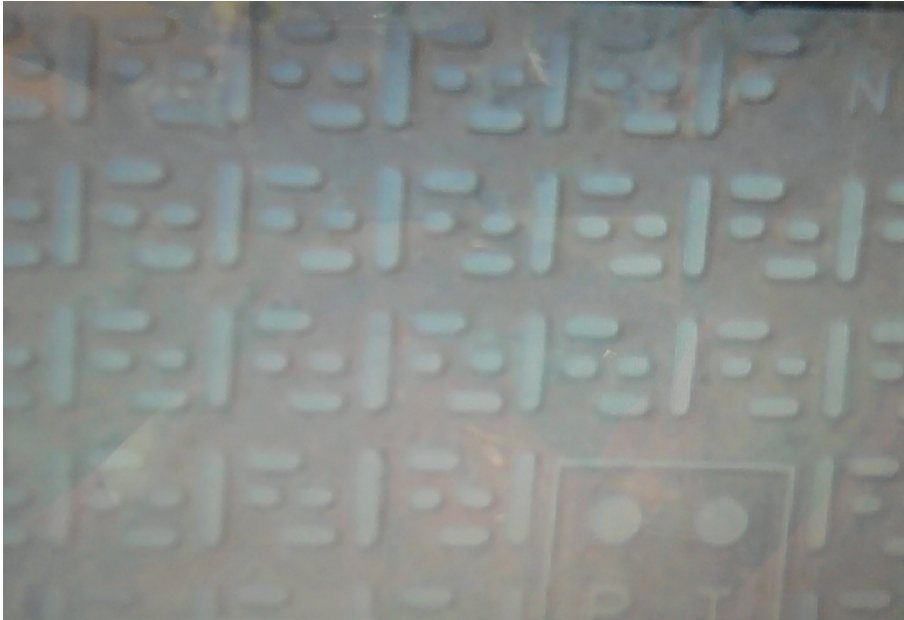
Rua Tavares Canário





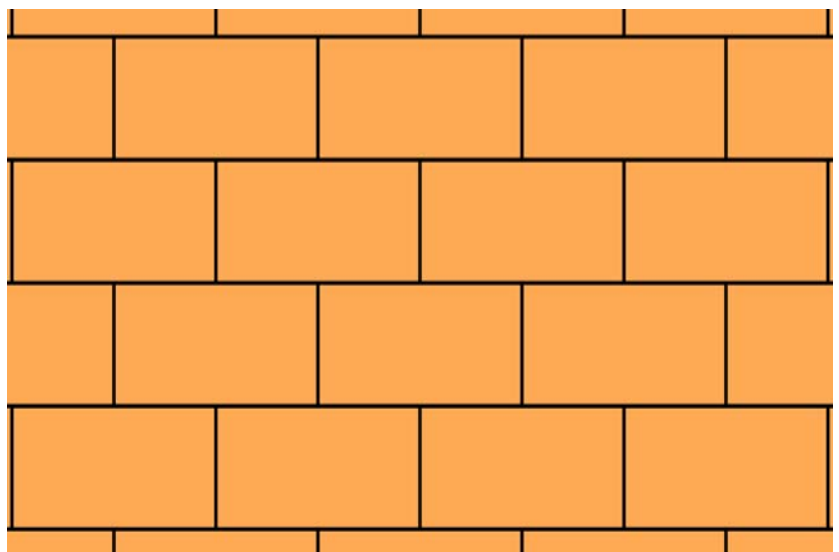
$W_2$

Rua do Poço, Ponta Garça



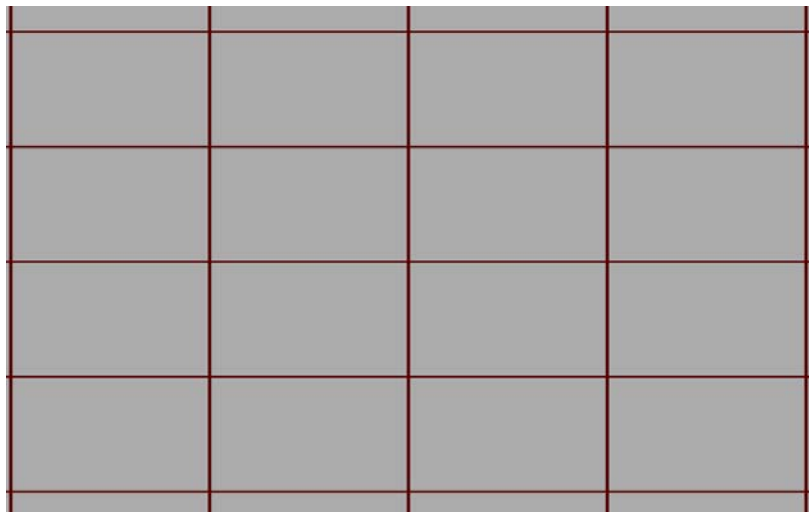
$$W_2^1$$

**Por detrás da cantina da UAC**



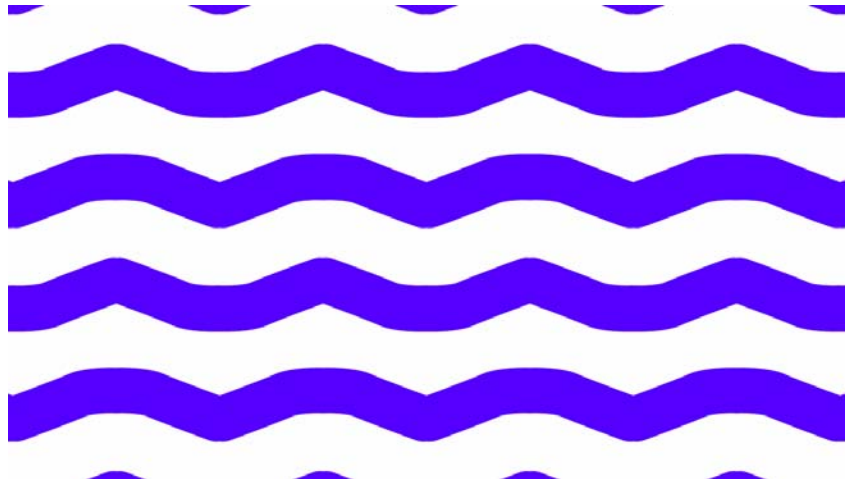
$$W_2^2$$

### Corredor do Departamento das Ciências da Educação



$$W_2^3$$

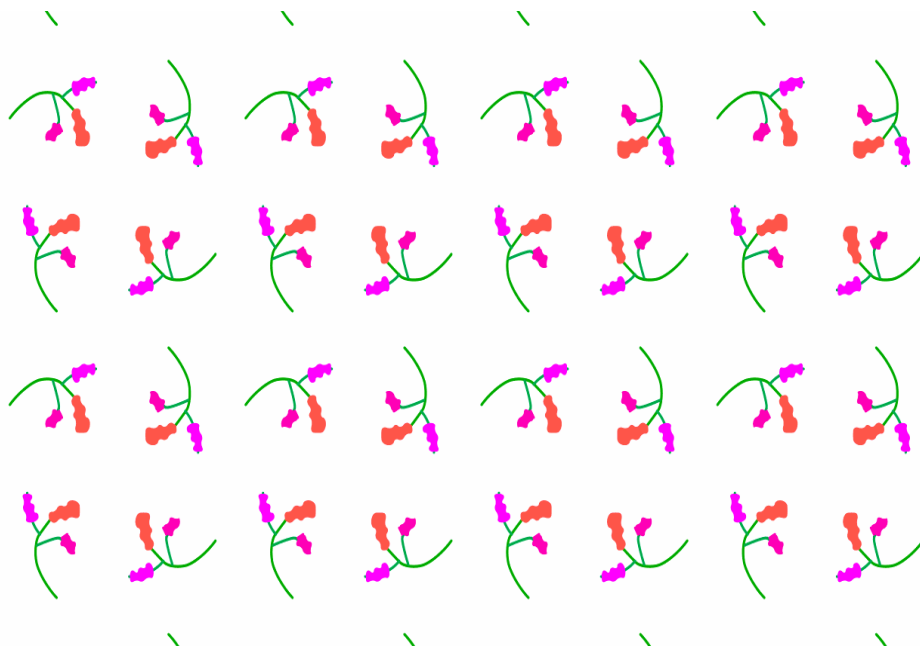
### Chão do Centro Comercial Hiper Solmar





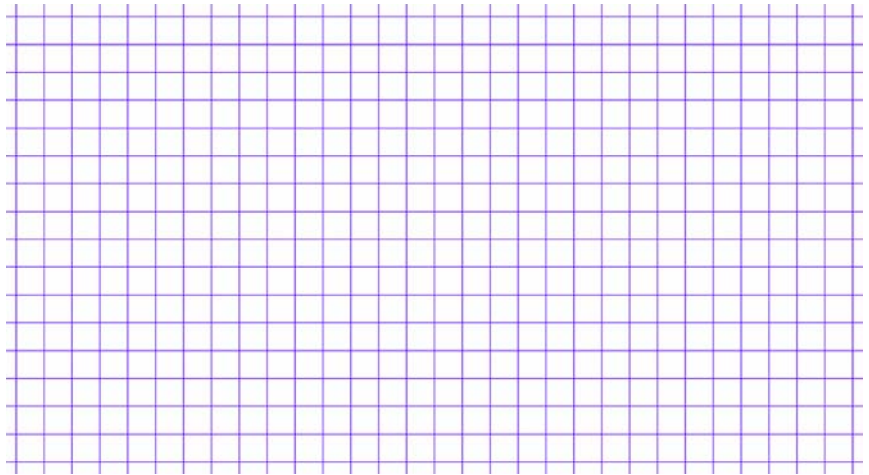
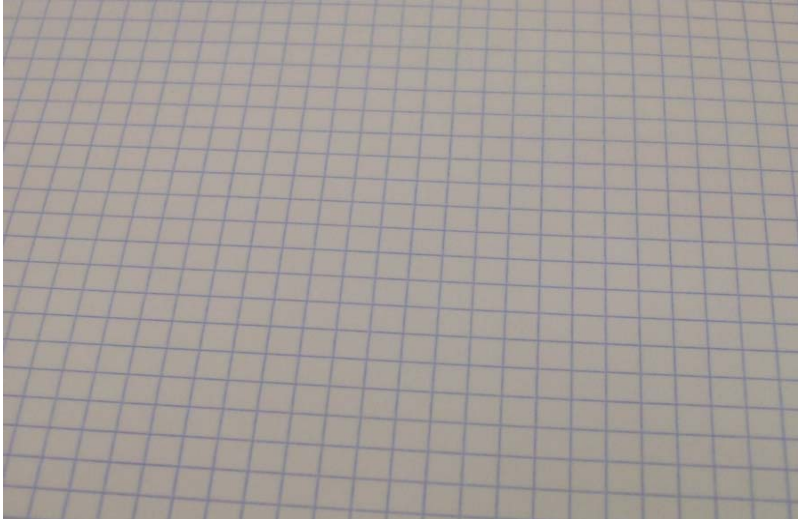
# $W_4$

## Toalha de mesa



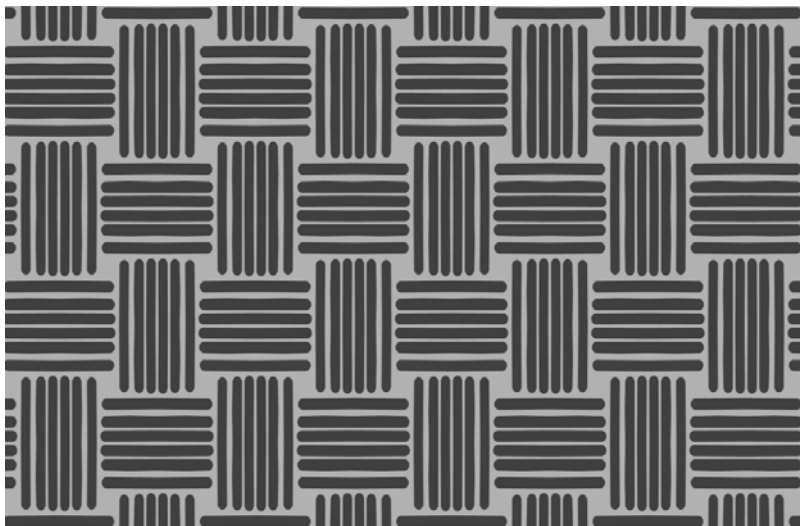
$$W_4^1$$

**Folha de papel quadriculado**



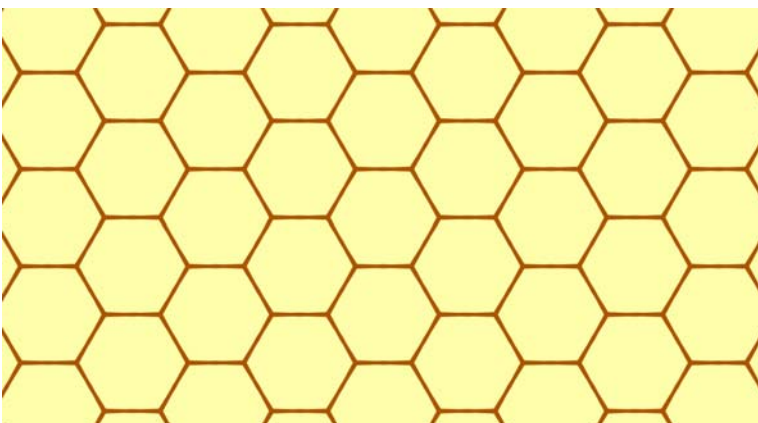
$$W_4^2$$

### Tapete esplanada Paparoca



$W_6^1$

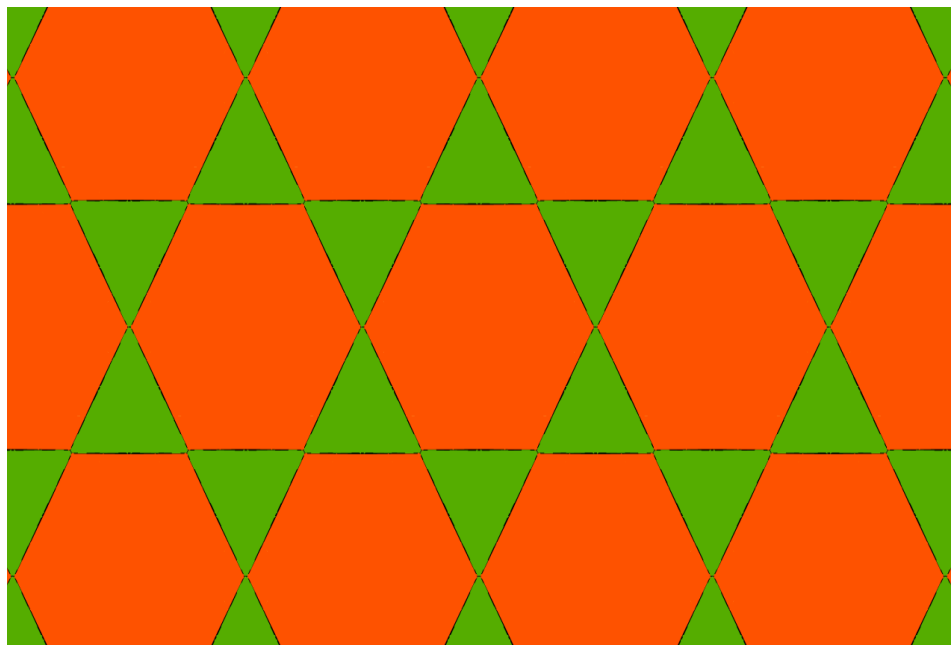
**Galinheiro e parede da Colmeia**





$$W_6^1$$

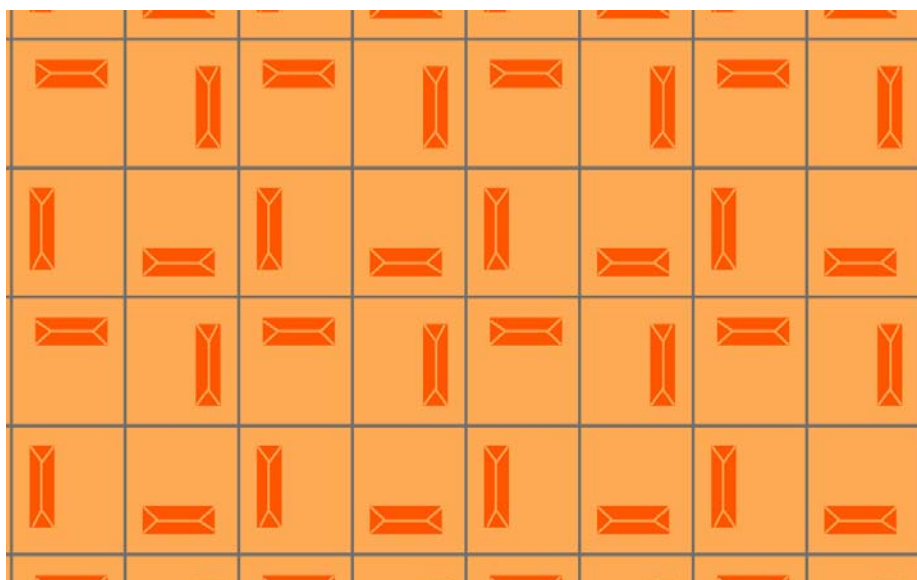
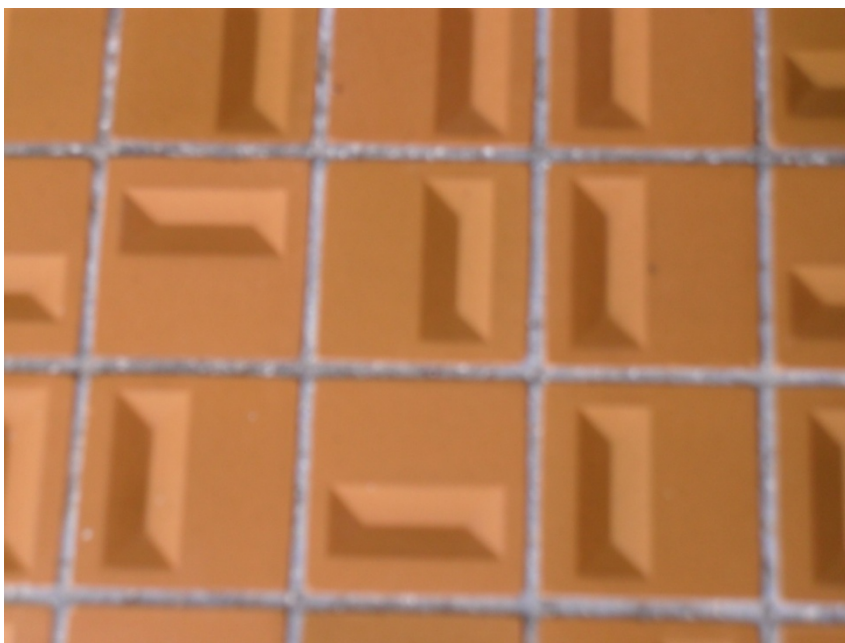
## Marrocos





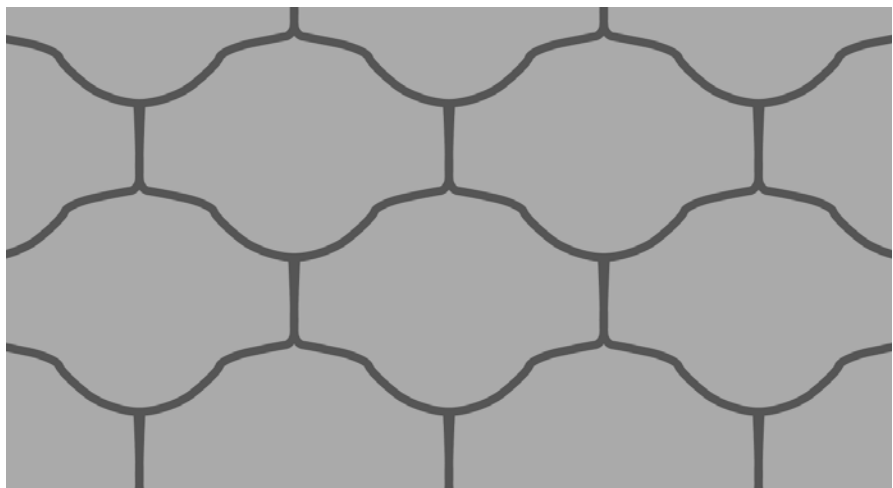
## $W_4$

Rua Guilherme Poças Falcão – parede de uma casa particular



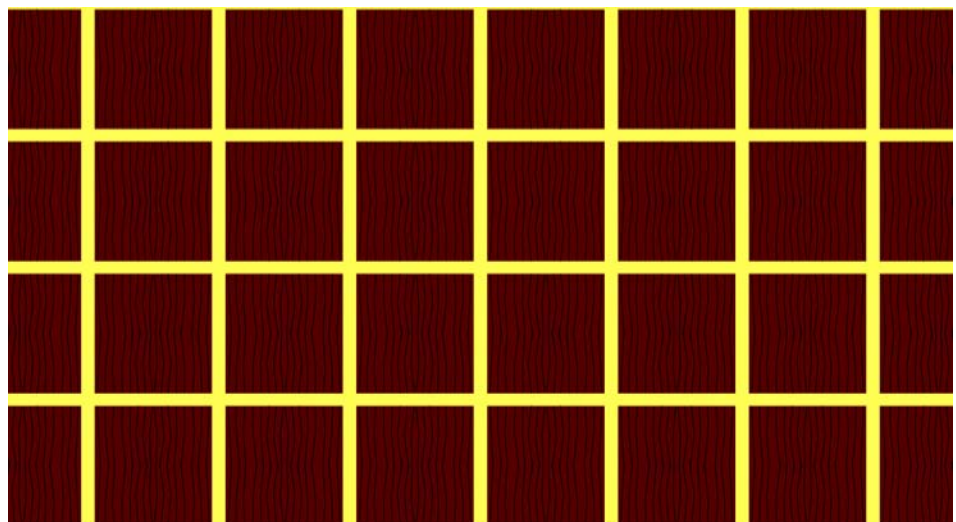
$$W_2^1$$

**Chão junto à cantina da Universidade dos Açores**



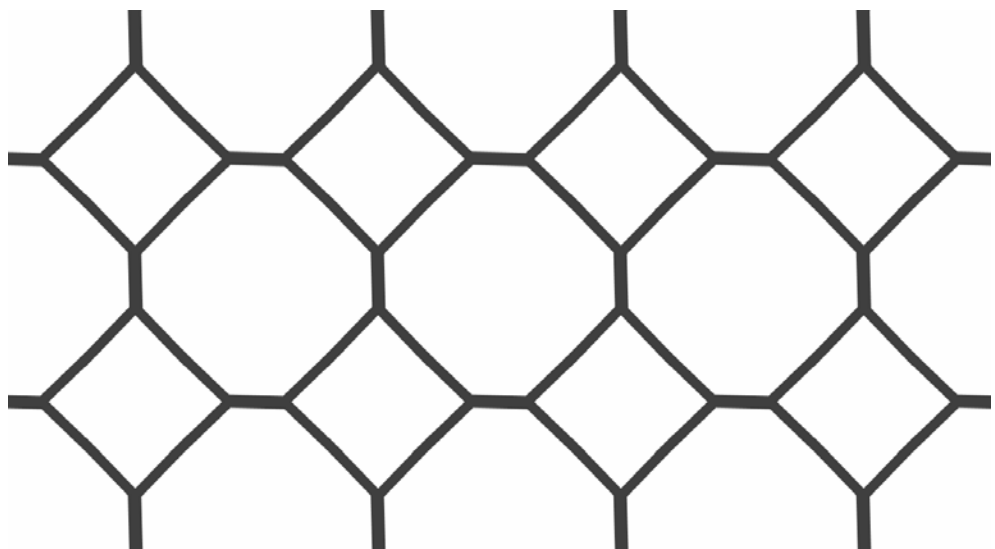
# $W_4^1$

## Santa Bárbara – Núcleo de Arte Sacra do Museu Carlos Machado



$W_4^1$

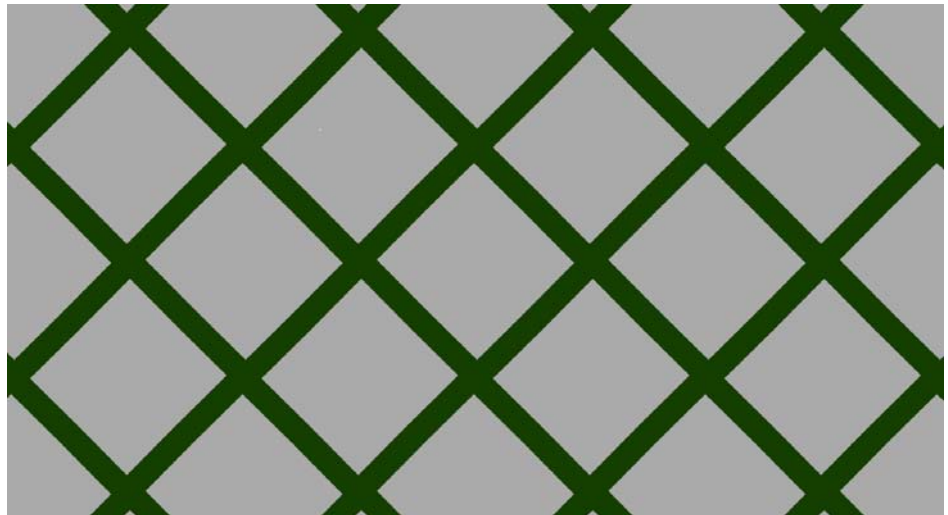
Rua Guilherme Poças Falcão





$$W_4^1$$

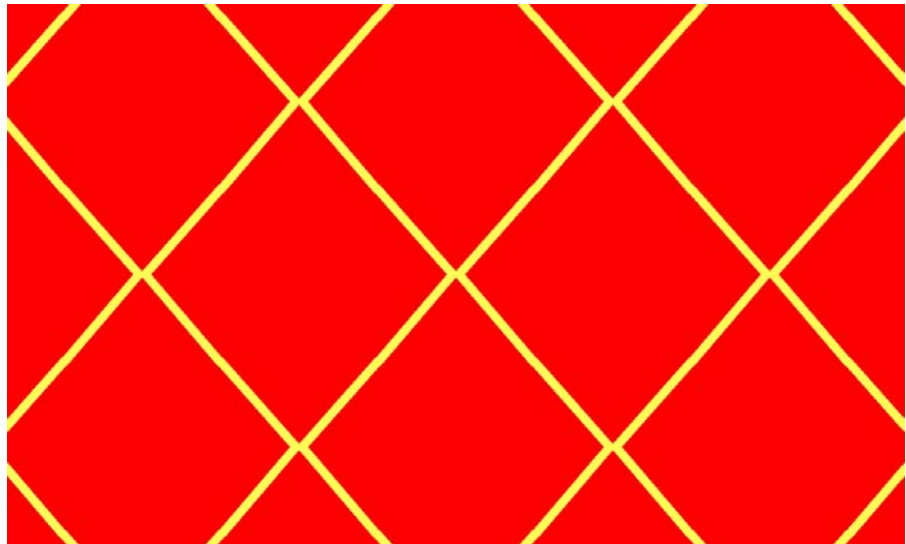
**Museu Carlos Machado – janela**





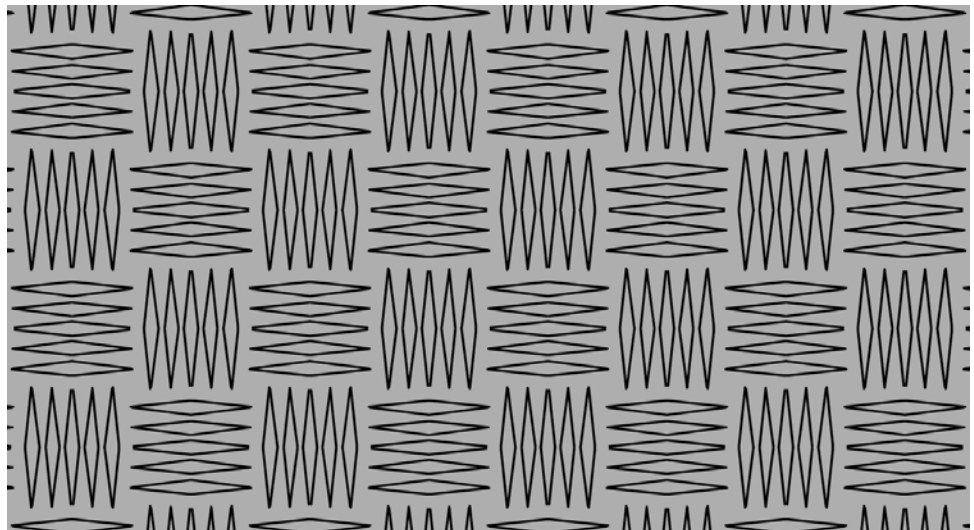
$W_4^1$

**Montra da loja Silvia Pipi**



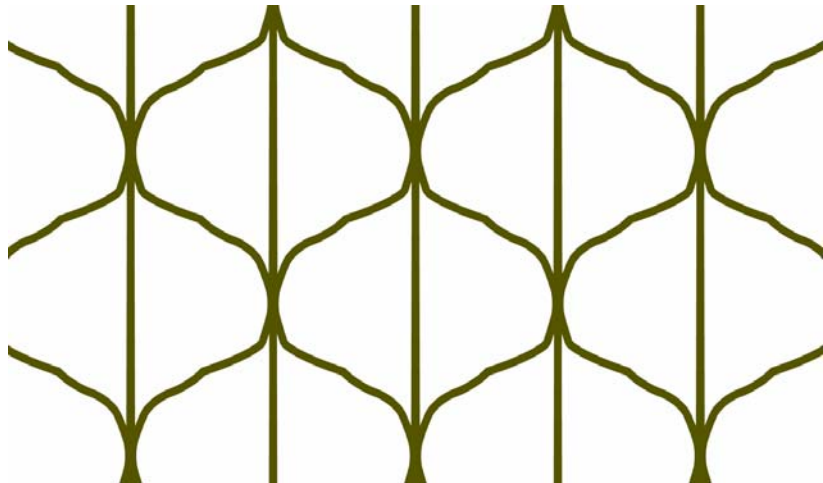
$$W_4^2$$

**Rua José Maria Raposo do Amaral**



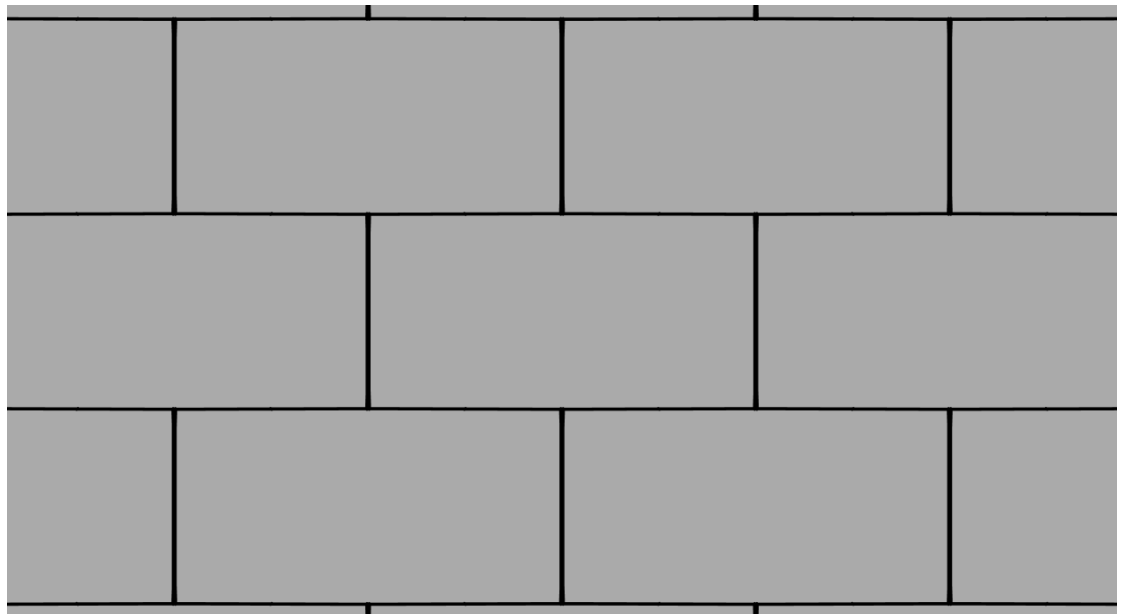
$$W_2^1$$

**Junto ao Hotel do Colégio**



$$W_2^1$$

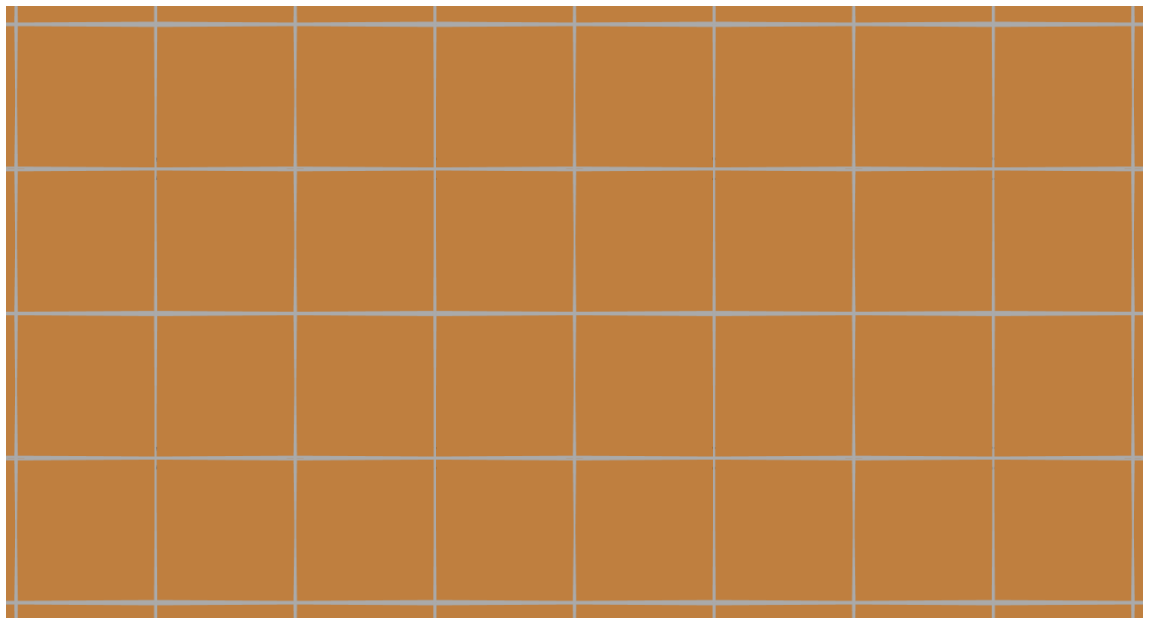
**Chão do Núcleo de Arte Sacra do Museu Carlos Machado**





$W_4^1$

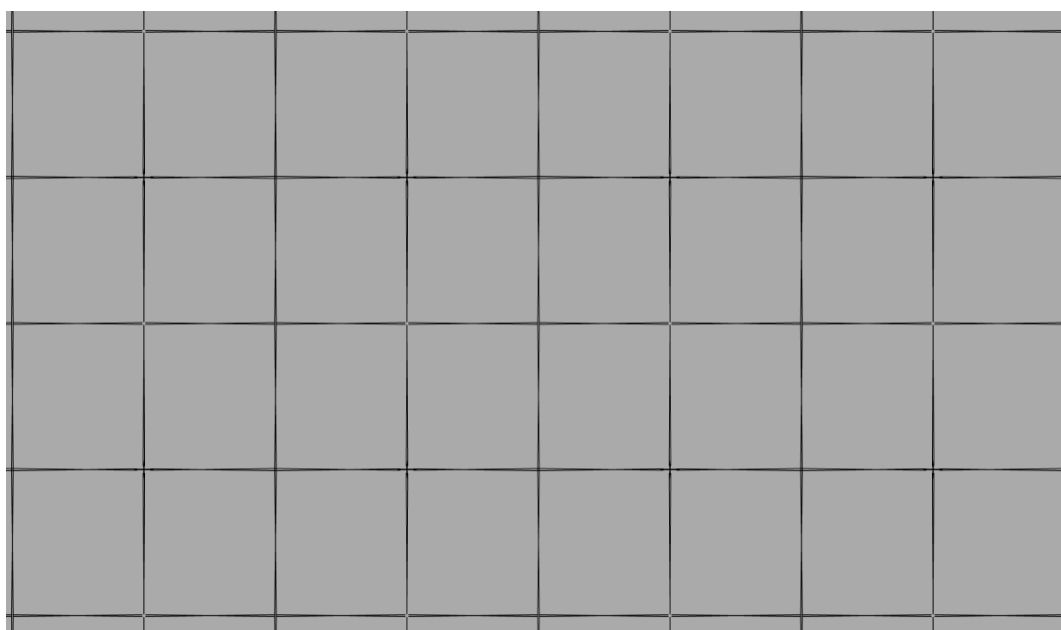
**Azulejos**





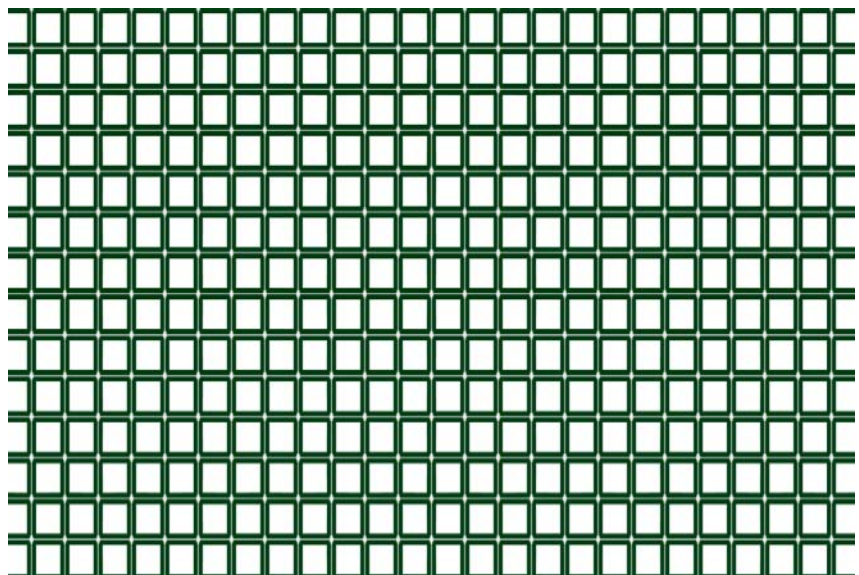
$$W_4^1$$

## Azulejo



$W_4^1$

**Janela do Museu Carlos Machado**



# $W_4^1$

**Quadro do Pentecostes, Núcleo de Arte Sacra do Museu Carlos Machado**

